

Coding & Marking Solutions

Inkjet Printer

UX Series





For over 40 years, Hitachi has developed and produced high-performance ink jet printers based on the well-proven Continuous InkJet (CIJ) principle for industrial marking.

Hitachi Industrial IJ printers are high-speed printers adopting a non-contact printing method, ideal for a wide range of applications. They are capable of applying best before dates, logos, barcodes, lot numbers and data matrix codes, which makes the new UX-Series the perfect solution for both complex and standard applications.

The UX-Series is a global model with highly evolved “Reliability”, “Efficiency”, “Ease of Use” and even “Eco-friendly” performance.

About the UX Series

High reliability

Hitachi Products are renowned for being extremely reliable in harsh environments. All functionally critical parts are manufactured in-house. The use of Hitachi's own components reinforces the high quality levels, reliability and excellent value for money.

Cost-effective

The new economical ink recovery technique achieves industry-leading levels of make-up consumption and the very low maintenance costs minimise the total cost of ownership.

Global sales & service network

Are you looking for a proven global company that can work with you at a local level? Hitachi offers a global sales and service network when marking, coding and traceability challenges demand a coordinated answer. For each of your locations, and across your entire organization we will champion your goals by providing international consistency, global perspective, broad expertise and coordinated service with dedicated contacts. Our global team applies its worldwide technical expertise to your unique challenges in a



consistent way. Tangible deliverables and proven solutions are results of our business analysis and project implementation. Mechanical integration supported by 3D CAD design, electrical schematics, customized circuits, application specifications and customized documents. In addition, cross-border project management and coordination between suppliers, OEM's and end-users are part of our deliveries. You gain more visibility and save time and money.



Simplicity

Mess-free, Mistake-proof Fluid Refills



Intelligent fluid cartridges reduce the possibility of hazardous fluid spills during refill. Shaped differently, the Ink and Make-up cartridges are easily identifiable as well as sized to fit in each respective receptacle.

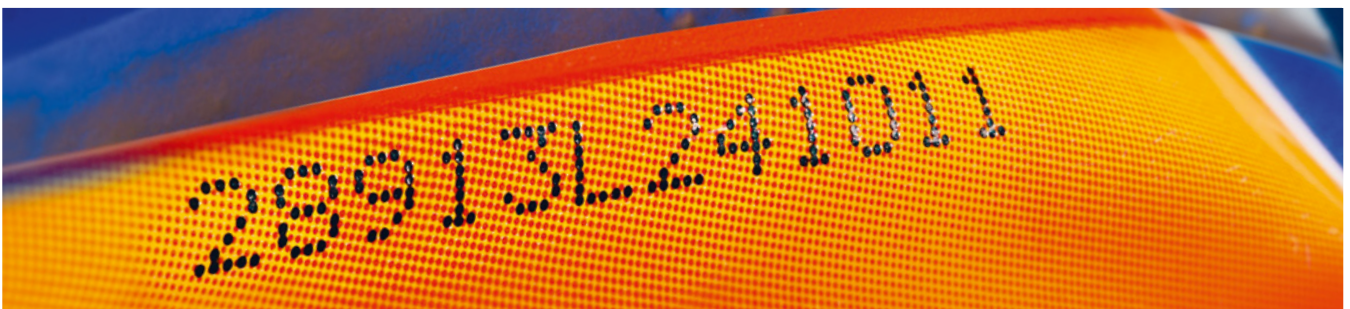


RFID Recognition



Error reduction is key to increased uptime and that's why the UX Series now features RFID* Recognition for ink and make-up replacement. A quick scan of each bottle allows the system to identify the fluid in question and instruct the operator based on compatibility.

*Some geographic areas are excluded.
Hitachi Industrial Equipment Systems Co. Ltd, declares that the IC tag reader is in compliance with the essential requirements and other relevant provisions of the FDD Part 15 subpart C, EN 301 489 1/3, EN 300 330-1/2

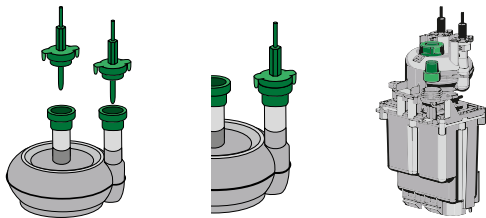


Tool-less Filter Replacement



Ink filters can be replaced without the use of tools or a technician, resulting in virtually zero downtime for easy maintenance. No more mandatory, timebased failure due to machine operation.

(Original Hitachi patent: EP 226 1037 A1 / EP 230 5470 A1)



IC Card with RFID function



With the new Hitachi IC Card any login information and print data can be managed fast, easy, and safely.

User Login

By scanning the IC Card, only the registered user can login quickly without entering a password. Each user operation can be limited to prevent human error.


Print data selection

By scanning the IC Card the print data can be quickly called up. Prevent calling up incorrect data which may happen with manual operation.




Intuitive Machine Interface

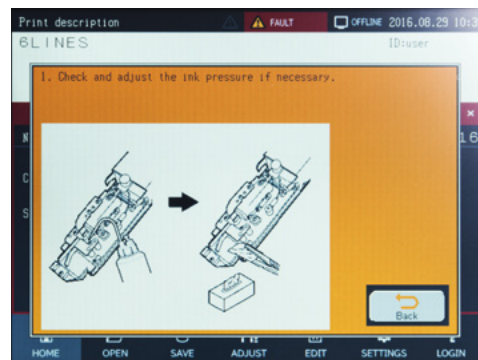
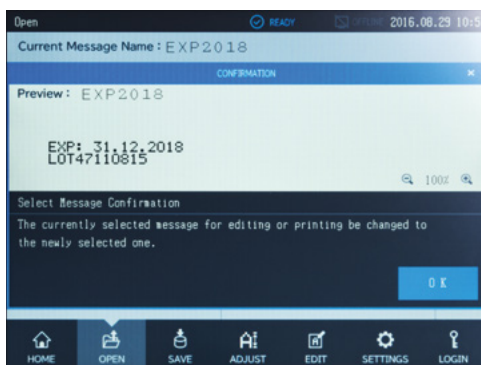
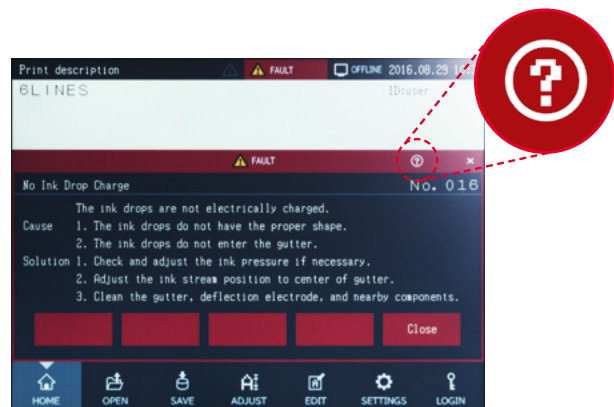
Intuitive User Interface

 A 10.4-inch TFT LCD touch-panel screen provides a wide, easy-to-see viewing angle and intuitive operation. In addition, when changing print messages, a preview function allows the operator to verify on-screen what message will be changed to help avoid erroneous printing.



On-Screen Guidance

 The UX Series features an integrated, easy to access troubleshooting guide, helping operators easily find answers to common issues and reducing downtime due to simple problems.

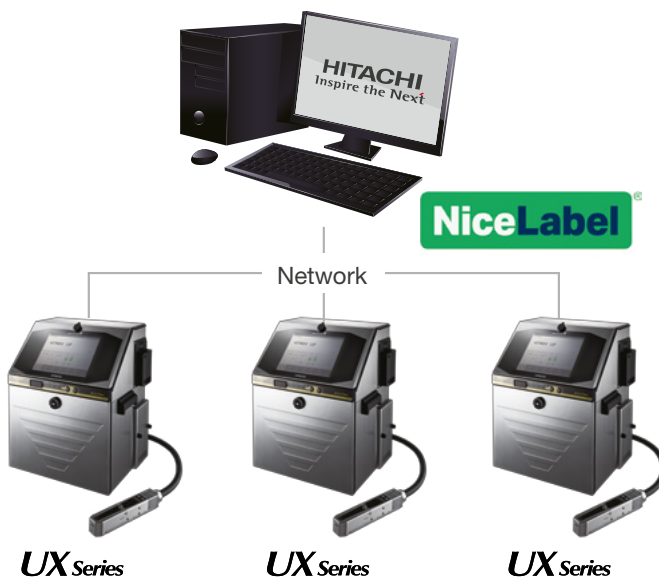


Convenient Remote Management



Ethernet is a standard feature on UX machines.* In addition, open network is supported, allowing easier system integration. Collective management via a host system enables two or more devices to be easily networked.

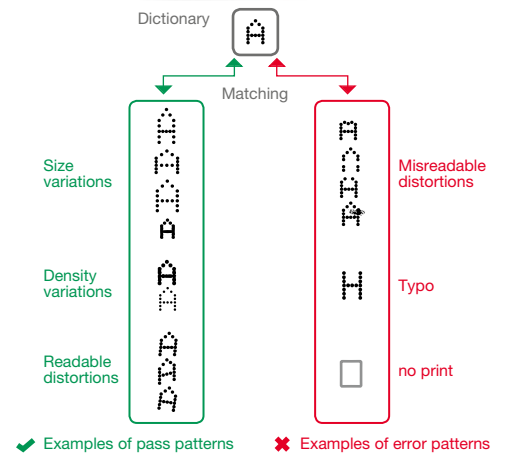
*UX-B excluded



Print Error Recognition



The Hitachi Vision System has been optimised to work with Ink Jet typical dot matrix characters. It verifies the content of each printed message instantaneously while allowing for typical CIJ character variations, assuring an optimal level of print quality.

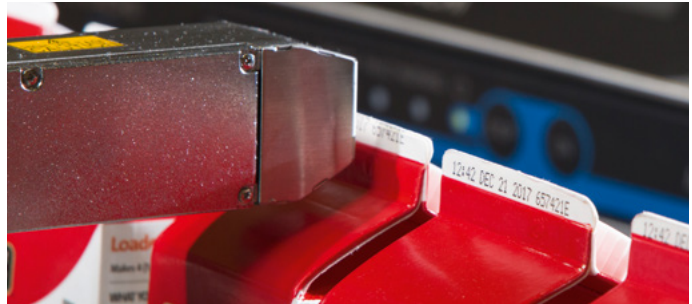


Versatile Durable Print Head

Versatile Tapered Print Head



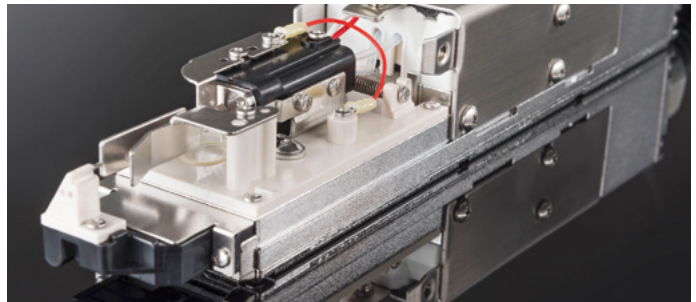
Proximity to product can be challenging using traditional print heads, but the UX's new Tapered print head technology allows for even closer printing, resulting in improved print quality.



Durable Ni-Cr Plating



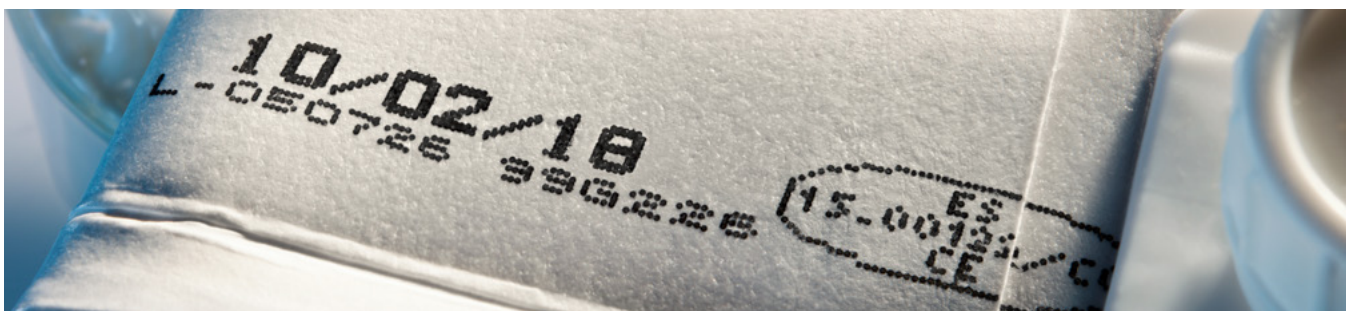
The UX-Series print head features a new Nickel-Chrome finish, giving it exceptional corrosion resistance and increasing the print head's lifespan in demanding environments like those requiring wash-down or exposure to caustic chemicals.



Up to 6-Line Print



A single UX print head can print up to six lines by employing an innovative print control system. High-speed single line printing of excellent quality is also possible. Hitachi's original interlaced-print-control-system makes each print character appear extremely clear regardless of print height.



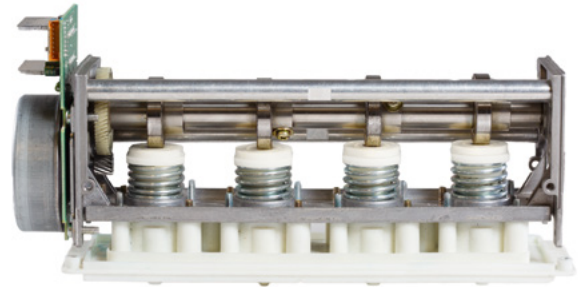
Reliability

Pump Unit (Valves and Camshaft)



At the heart of the UX Series inkjet printer is a diaphragm based circulation system. Unique to Hitachi, the UX's diaphragm system dramatically improves reliability, leading to a reduction in total cost of ownership.

A dedicated viscometer gives a true measure of the ink's viscosity further increasing reliability and uptime.



Reduced Make-up Consumption and Running Cost



Motor Speed Control Function suppresses make-up evaporation and offers industry-leading level of make-up consumption.

The premium model UX-E achieves a consumption of only 2.5 ml/h thanks to Hitachi's latest patented Fluid Consumption Reduction System.

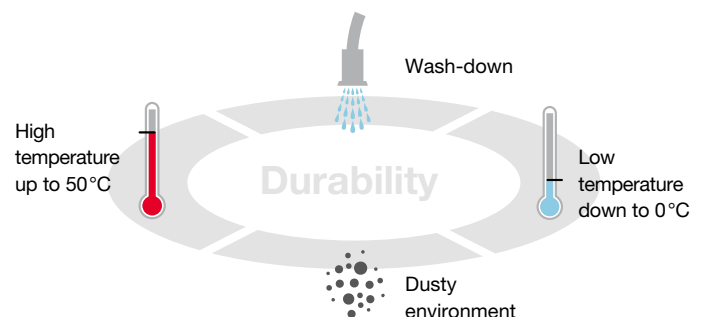
2.5 ml/h*

*Hitachi Ink 1067k at 20°C

Designed for harsh environments



The stainless steel cabinet offers IP65 and allows a wash-down with pressured water and industrial detergent, to meet any environment and hygiene requests. The UX Series with IP65 protection is the ideal choice for applications in the meat and dairy industries.



Twin Nozzle Model

Flexible 8 Line Print



The UX twin print head now offers the ability to produce 8 lines of text by combining two individual nozzles into one, compact design. In addition, by utilizing Hitachi's first on the market "interlaced" print control technique, multiple line messages are printed clearly and legibly, further reducing coding errors due to misprint.

High-speed printing



Two nozzles at one print head realizes double-speed printing, which can track even on a high-speed production line, resulting in high-quality printing regardless of the number of print lines.

Versatile 64-Dot



Hitachi's innovative design now produces 64 vertical dots of print, resulting in large, bold characters. This makes the UX twin nozzle printer ideally suited to mark company logos, UL marks, or any other pattern previously unachievable with traditional print heads.

Character Stitch Capability



A unique option in the new twin-nozzle printer is the ability to stitch both nozzles together. This results in characters that are bigger and bolder than ever, compared to those printed by individual nozzles. This is particularly useful when character recognition is needed at a distance from the product.

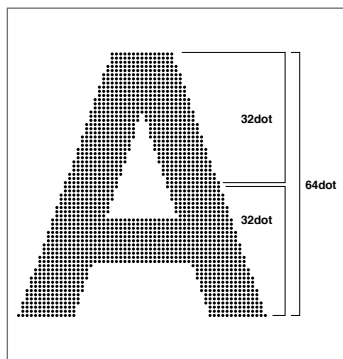


Image is for illustration purposes



UX-P For Pigmented Inks

UX-P for pigmented inks



The UX Printer is designed for high contrast marking on dark surfaces with pigmented inks at highest quality. Typical application areas include automotive parts, cables, plastic piping and electronic components.



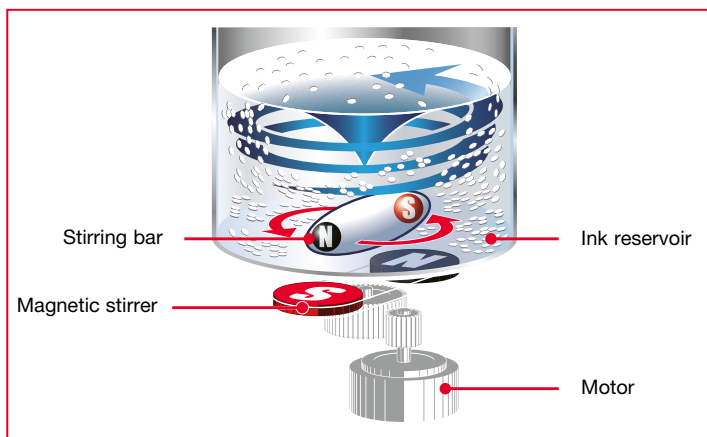
Pigmented ink stirring system



The electric stirrer system prevents the agglomeration and the setting of pigments.

In addition, the Pigment model is equipped with an "Ink circulation control" function, which allows the ink to circulate even in a standby mode to avoid the ink fixing and ensures a smooth operation during production.

Smooth supply for ink and make-up fluid
Ink and make-up fluid can be supplied at any time with no interruption



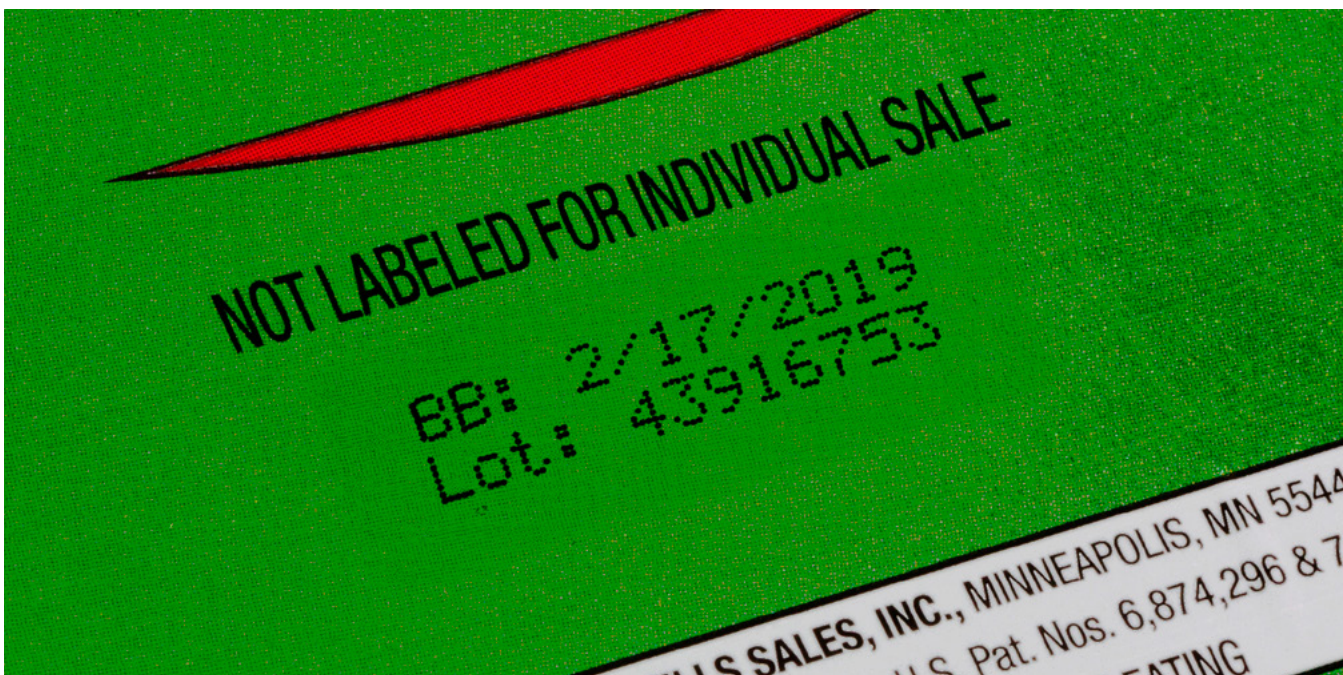
Electric stirrer





UX-B Model (Basic)

Standard Print Samples			
5 x 5	1 LINE 0123456789ABCDEF GH 012345678	2 LINE 012345678 ABCDEFGHI	3 LINE 012345678 ABCDEFGHI JKLMNOPQR
5 x 7	1 LINE 0123456789ABC 0123456	2 LINE 012345678 ABCDEFGHI	3 LINE 012345678 ABCDEFGHI JKLMNOPQR
7 x 10	1 LINE 0123456789 012345	2 LINE 01234567 ABCDEFGH	3 LINE 0123456789013456 ABCDEFGHIJKLNOPQ TUVWXYZABCDEFGHIJ
10 x 12	1 LINE 0123456789ABC 0123456789	2 LINE 01234567890 ABCDEFGHIJK	
12 x 16	1 LINE 0123456789ABC 0123456 01	2 LINE 012 ABC	
18 x 24	1 LINE 0123456789 0123456ABC		



Standard Specifications

Item	UX-B160W	
Nozzle Size	65µm	
Maximum number of print lines	Up to 3 lines	
Maximum number of print characters	Up to 240 characters	
Font (Horizontal x Vertical)	4 x 5	-
	5 x 5	✓
	5 x 7(8), 9 x 7(8)	✓
	7 x 10	✓
	11 x 11	✓ (Chinese only)
	10 x 12	✓
	12 x 16	✓
	18 x 24	✓
	24 x 32	-
	30 x 40	-
36 x 48	-	
Character height	2 - 10 mm	
Display & input device	WYSIWYG design Display: TFT LCD (10.4" color), backlight provided Input device: Touch panel, input sound provided	
Screen language (2 languages selectable)	English, Chinese, Korean, Thai, Vietnamese, German, French, Dutch, Italian, Spanish, Portuguese, Swedish, Danish, Greek, Russian, Czech, Polish, Arabic, Serbian, Turkish, Hungarian, Bulgarian, Catalan, Romanian, Finnish, Norwegian, Slovenian	
Maximum print rate (Character per second) (Font 5x5, space 1, 1 line)	Up to 1,281	
Standard characters	Alphanumeric (A-Z, a-z, 0-9), symbols (27) and space: Total 90	
User patterns	50 patterns each for dot matrix	
Print functions	Calendar, Count, Font mixture, Password	
Barcode printing	-	
2D printing	-	
Message storage capacity	150 Messages	
Input signal	Print target detection, Rotary encoder pulse, (NPN/PNP Selectable)	
Output signal	Print ready, Fault, Warning (NPN Only)	
Data interface	Option (RS-232C at baud rates selectable up to 115,200bps)	
Ethernet (Modbus communication)	-	
External memory	USB for user data storage	
Printhead cable length / angle	4m (in-line/90 degrees)	
Operating temperature range	0-45°C (1069K Ink)*	
Operating humidity range	30-90% RH (no condensation)	
Power supply (Automatic voltage selection)	AC100-120/220-240V±10% 50/60Hz 120 VA	
Approval	CE, UL, cUL, C-Tick, FCC, ICES	
Dimensions (Width x Depth x Height)	400 x 320 x 527 mm	
International protection	IP55	
Approximate weight	27kg	

* Ink types and temperature are limited.



Note: Main unit dimensions do not include any projections.



UX-D Model (Standard)

Standard Print Samples								
5 x 5	1 LINE	0123456789ABCDEFGH	2 LINE	012345678 ABCDEFGHI	3 LINE	012345678 ABCDEFGHI JKLMNOPQR	6 LINE	0123456789 ABCDEFGHI JKLMNOPQR STUVWXYZ 0123456789 ABCDEFGHI JKLMNOPQR
5 x 7	1 LINE	0123456789ABC	2 LINE	012345678 ABCDEFGHI	3 LINE	012345678 ABCDEFGHI JKLMNOPQR	4 LINE	0123456789 ABCDEFGHI JKLMNOPQR STUVWXYZ
7 x 10	1 LINE	0123456789	2 LINE	01234567 ABCDEFGH	3 LINE	0123456789013456 ABCDEFGHIJKLNO PQRSTUVWXYZABCDEFGHIJ		
10 x 12	1 LINE	0123456789ABC	2 LINE	0123456789 ABCDEFGHIJK				
12 x 16	1 LINE	0123456789ABC			2 LINE	01234567890 ABCDEFGHIJK		
12 x 16	1 LINE	0123456789ABC		01			2 LINE	012 ABC
18 x 24	1 LINE	0123456789						
18 x 24	1 LINE	0123456ABC						
24 x 32	1 LINE	012345ABCD						
30 x 40	1 LINE	012345ABCDEF						
36 x 48	1 LINE	012345ABCD						



Standard Specifications

Item		UX-D160W
Nozzle Size		65µm
Maximum number of print lines		Up to 6 lines
Maximum number of print characters		Up to 240 characters (Option: Up to 1,000 characters)
Font (Horizontal x Vertical)	4 x 5	✓
	5 x 5	✓
	5 x 7(8) 9 x 7(8)	✓
	7 x 10	✓
	11 x 11	✓ (Chinese only)
	10 x 12	✓
	12 x 16	✓
	18 x 24	✓
	24 x 32	✓
	30 x 40	✓
36 x 48	✓	
Character height		2 - 10 mm
Display & input device		WYSIWYG design display: TFT LCD (10.4" color), backlight provided input device: Touch panel, input sound provided
Screen language (2 languages selectable)		English, Chinese, Korean, Thai, Vietnamese, German, French, Dutch, Italian, Spanish, Portuguese, Swedish, Danish, Greek, Russian, Czech, Polish, Arabic, Serbian, Turkish, Hungarian, Bulgarian, Catalan, Romanian, Finnish, Norwegian, Slovenian
Maximum print rate (Character per second) (Font 5x5, space 1, 1 line)		Up to 1,148 (Option: Up to 2,563)
Standard characters		Alphanumeric (A-Z, a-z, 0-9), symbols (27) and space: Total 90
User patterns		200 patterns each for dot matrix (50 patterns for 30x40 and 36x48 fonts)
Print functions		Calendar, Count, Font mixture, Password
Barcode printing		code39, ITF, NW-7, EAN-13, EAN-8, UPC-A, UPC-E, code128/EAN-128, GS-1 DataBar
2D printing		Data Matrix (Alphabet: 49 characters/Numbers: 98 characters), QR Code, Micro QR code
Message storage capacity		300 Messages [Option: Up to 2,000 Messages (depends on data content)]
Input signal		Print target detection, Printing stop, Rotary encoder pulse, Reciprocative printing, Remote control (Run, Stop, High-voltage ON/OFF, Reset), (NPN/PNP Selectable)
Output signal		Print in progress or Print complete, Online (NPN/PNP Selectable), Print ready, Fault, Warning (NPN Only)
Data interface		RS-232C at baud rates selectable up to 115,200bps
Ethernet (Modbus communication)		IEEE802.3, 100BASE-T
External memory		USB for user data storage
Printhead cable length / angle		4m (in-line/90 degrees; Option: 6m)
Operating temperature range		0-45°C (1069K Ink)*
Operating humidity range		30-90% RH (no condensation)
Power supply (Automatic voltage selection)		AC100-120/220-240V±10% 50/60Hz 120 VA
Approval		CE, UL, cUL, C-Tick, FCC, ICES
Dimensions (Width x Depth x Height)		400 x 320 x 527 mm
International protection		IP65
Approximate weight		27kg

* Ink types and temperature are limited.

** Please consult your sales representative for further upgrade options.



Note: Main unit dimensions do not include any projections.



UX-D Model (High-Speed)

Standard Print Samples

5 x 5	1 LINE	0123456789ABCDEFGHI	2 LINE	012345678 ABCDEFGHI	3 LINE	012345678 ABCDEFGHI JKLMNOPQR		
		012345678						
5 x 7	1 LINE	0123456789ABC	2 LINE	012345678 ABCDEFGHI	3 LINE	012345678 ABCDEFGHI JKLMNOPQR	4 LINE	012345678 ABCDEFGHI JKLMNOPQR STUVWXYZ
		0123456						
7 x 10	1 LINE	0123456789	2 LINE	01234567 ABCDEFGH	3 LINE	012345678901234567 ABCDEFGHIJKLMNPO RSTUVWXYZABCDEFGHIJK		
		012345						
12 x 16	1 LINE	0123456789ABC				2 LINE	01234 ABCDE	
		012345	01					
18 x 24	1 LINE	0123456789						
		0123456ABC						



Standard Specifications

Item	UX-D150W	
Nozzle Size	55µm	
Maximum number of print lines	Up to 4 lines	
Maximum number of print characters	Up to 1,000 characters	
Font (Horizontal x Vertical)	4 x 5	✓
	5 x 5	✓
	5 x 7(8) 9 x 7(8)	✓
	7 x 10	✓
	11 x 11	-
	10 x 12	-
	12 x 16	✓
	18 x 24	✓**
	24 x 32	-
	30 x 40	-
36 x 48	-	
Character height	2 - 8 mm	
Display & input device	WYSIWYG design display: TFT LCD (10.4" color), backlight provided input device: Touch panel, input sound provided	
Screen language (2 languages selectable)	English, Chinese, Korean, Thai, Vietnamese, German, French, Dutch, Italian, Spanish, Portuguese, Swedish, Danish, Greek, Russian, Czech, Polish, Arabic, Serbian, Turkish, Hungarian, Bulgarian, Catalan, Romanian, Finnish, Norwegian, Slovenian	
Maximum print rate (Character per second) (Font 5x5, space 1, 1 line)	Up to 3,173	
Standard characters	Alphanumeric (A-Z, a-z, 0-9), symbols (27) and space: Total 90	
User patterns	200 patterns each for dot matrix	
Print functions	Calendar, Count, Font mixture, Password	
Barcode printing	code39, ITF, NW-7, EAN-13, EAN-8, UPC-A, UPC-E, code128/EAN-128, GS-1 DataBar	
2D printing	Data Matrix (Alphabet: 49 characters/Numbers: 98 characters), QR Code, Micro QR code	
Message storage capacity	300 Messages [Option: Up to 2,000 Messages (depends on data content)]	
Input signal	Print target detection, Printing stop, Rotary encoder pulse, Reciprocative printing, Remote control (Run, Stop, High-voltage ON/OFF, Reset), (NPN/PNP Selectable)	
Output signal	Print in progress or Print complete, Online (NPN/PNP Selectable), Print ready, Fault, Warning (NPN Only)	
Data interface	RS-232C at baud rates selectable up to 115,200bps	
Ethernet (Modbus communication)	IEEE802.3, 100BASE-T	
External memory	USB for user data storage	
Printhead cable length / angle	4m (in-line/90 degrees)	
Operating temperature range	0-40°C (1069K Ink)*	
Operating humidity range	30-90% RH (no condensation)	
Power supply (Automatic voltage selection)	AC100-120/220-240V±10% 50/60Hz 120 VA	
Approval	CE, UL, cUL, C-Tick, FCC, ICES	
Dimensions (Width x Depth x Height)	400 x 320 x 527 mm	
International protection	IP65	
Approximate weight	27kg	

* Ink types and temperature are limited.

** Please consult your sales representative for further upgrade options.



Note: Main unit dimensions do not include any projections.



UX-D Model (Small Characters)

Standard Print Samples				
5 x 5	1 LINE	0123456789	2 LINE	0123456789 KLMNOPQRST
		123456789		123456789 ABCDEFGHIJKL
5 x 7	1 LINE	12345679ABCDEFGHIH	2 LINE	12345679012345 ABCDEFGHIJKL
		123456789		123456790123456 ABCDEFGHIJKLMNO abcdefghijklmno
7 x 10	1 LINE	1234567890	2 LINE	1234567890123 ABCDEFGHIJKLM
		123456789		1234567890123456789012345678 ABCDEFGHIJKLMN OPQRSTUVWXYZ1234567890123456
12 x 16	1 LINE	01234ABCDE		2 LINE
		123456789ABC		0123456789 ABCDEFGHIJ
18 x 24	1 LINE	1234567ABCDEF		
24 x 32	1 LINE	1234567ABCDEF		



Standard Specifications

Item	UX-D140W	
Nozzle Size	40µm	
Maximum number of print lines	Up to 4 lines	
Maximum number of print characters	Up to 1,000 characters	
Font (Horizontal x Vertical)	4 x 5	✓
	5 x 5	✓
	5 x 7(8) 9 x 7(8)	✓
	7 x 10	✓
	11 x 11	✓ (Chinese only)
	10 x 12	-
	12 x 16	✓
	18 x 24	✓
	24 x 32	✓
	30 x 40	-
36 x 48	-	
Character height	1 - 5mm	
Display & input device	WYSIWYG design display: TFT LCD (10.4" color), backlight provided input device: Touch panel, input sound provided	
Screen language (2 languages selectable)	English, Chinese, Korean, Thai, Vietnamese, German, French, Dutch, Italian, Spanish, Portuguese, Swedish, Danish, Greek, Russian, Czech, Polish, Arabic, Serbian, Turkish, Hungarian, Bulgarian, Catalan, Romanian, Finnish, Norwegian, Slovenian	
Maximum print rate (Character per second) (Font 5x5, space 1, 1 line)	Up to 3,030	
Standard characters	Alphanumeric (A-Z, a-z, 0-9), symbols (27) and space: Total 90	
User patterns	200 patterns each for dot matrix	
Print functions	Calendar, Count, Font mixture, Password	
Barcode printing	code39, ITF, NW-7, EAN-13, EAN-8, UPC-A, UPC-E, code128/EAN-128, GS-1 DataBar	
2D printing	Data Matrix (Alphabet: 49 characters/Numbers: 98 characters), QR Code, Micro QR code	
Message storage capacity	300 Messages [Option: Up to 2,000 Messages (depends on data content)]	
Input signal	Print target detection, Printing stop, Rotary encoder pulse, Reciprocal printing, Remote control (Run, Stop, High-voltage ON/OFF, Reset), (NPN/PNP Selectable)	
Output signal	Print in progress or Print complete, Online (NPN/PNP Selectable), Print ready, Fault, Warning (NPN Only)	
Data interface	RS-232C at baud rates selectable up to 115,200bps	
Ethernet (Modbus communication)	IEEE802.3, 100BASE-T	
External memory	USB for user data storage	
Printhead cable length / angle	4m (in-line/90 degrees)	
Operating temperature range	0-35°C (1069K Ink)*	
Operating humidity range	30-90% RH (no condensation)	
Power supply (Automatic voltage selection)	AC100-120/220-240V±10% 50/60Hz 120 VA	
Approval	CE, UL, cUL, C-Tick, FCC, ICES	
Dimensions (Width x Depth x Height)	400 x 320 x 527 mm	
International protection	IP65	
Approximate weight	27kg	

* Ink types and temperature are limited.

** Please consult your sales representative for further upgrade options.



Note: Main unit dimensions do not include any projections.



UX-D Model (Large Characters)

Standard Print Samples

4 x 5	1 LINE 01234567	2 LINE 01234567 ABCDEFGHI	3 LINE 01234567 ABCDEFGHI JKLMNOP	4 LINE 01234567 ABCDEFGHI JKLMNOP 89012345
5 x 5	1 LINE 01234567	2 LINE 0123456 ABCDEFG	3 LINE 12345678 ABCDEFGHI 89012345	4 LINE 12345678 ABCDEFGHI 89012345 JKLMNOP
5 x 7	1 LINE 12345678	2 LINE 12345678 ABCDEFGH	3 LINE 12345678 ABCDEFGH 90123456	4 LINE 12345678 ABCDEFGHI 90123456 JKLMNOP
9 x 7	1 LINE 12345678	2 LINE 12345678 ABCDEFGH	3 LINE 123456789 ABCDEFGHI 012345678	4 LINE 123456789 ABCDEFGHI 012345678 JKLMNOPQR
7 x 10	1 LINE 1234567	2 LINE 123456 ABCDEF	3 LINE 123456789 ABCDEFGHI 012345678	
12 x 16	1 LINE 123456789			2 LINE 12345 ABCDE
18 x 24	1 LINE 123456789			
24 x 32	1 LINE 123456789			



Standard Specifications

Item	UX-D110W	
Nozzle Size	100µm	
Maximum number of print lines	Up to 4 lines	
Maximum number of print characters	Up to 1,000 characters	
Font (Horizontal x Vertical)	4 x 5	✓
	5 x 5	✓
	5 x 7(8) 9 x 7(8)	✓
	7 x 10	✓
	11 x 11	-
	10 x 12	-
	12 x 16	✓
	18 x 24	✓
	24 x 32	✓
	30 x 40	-
36 x 48	-	
Character height	3 - 15 mm	
Display & input device	WYSIWYG design display: TFT LCD (10.4" color), backlight provided input device: Touch panel, input sound provided	
Screen language (2 languages selectable)	English, Chinese, Korean, Thai, Vietnamese, German, French, Dutch, Italian, Spanish, Portuguese, Swedish, Danish, Greek, Russian, Czech, Polish, Arabic, Serbian, Turkish, Hungarian, Bulgarian, Catalan, Romanian, Finnish, Norwegian, Slovenian	
Maximum print rate (Character per second) (Font 5x5, space 1, 1 line)	Up to 468	
Standard characters	Alphanumeric (A-Z, a-z, 0-9), symbols (27) and space: Total 90	
User patterns	200 patterns each for dot matrix	
Print functions	Calendar, Count, Font mixture, Password	
Barcode printing	code39, ITF, NW-7, EAN-13, EAN-8, UPC-A, UPC-E, code128/EAN-128, GS-1 DataBar	
2D printing	Data Matrix (Alphabet: 49 characters/Numbers: 98 characters), QR Code, Micro QR code	
Message storage capacity	300 Messages [Option: Up to 2,000 Messages (depends on data content)]	
Input signal	Print target detection, Printing stop, Rotary encoder pulse, Reciprocal printing, Remote control (Run, Stop, High-voltage ON/OFF, Reset), (NPN/PNP Selectable)	
Output signal	Print in progress or Print complete, Online (NPN/PNP Selectable), Print ready, Fault, Warning (NPN Only)	
Data interface	RS-232C at baud rates selectable up to 115,200bps	
Ethernet (Modbus communication)	IEEE802.3, 100BASE-T	
External memory	USB for user data storage	
Printhead cable length / angle	4m (in-line/90 degrees)	
Operating temperature range	0-35°C (1069K Ink)*	
Operating humidity range	30-90% RH (no condensation)	
Power supply (Automatic voltage selection)	AC100-120/220-240V±10% 50/60Hz 120 VA	
Approval	CE, UL, cUL, C-Tick, FCC, ICES	
Dimensions (Width x Depth x Height)	400 x 320 x 527 mm	
International protection	IP65	
Approximate weight	27kg	

* Ink types and temperature are limited.

** Please consult your sales representative for further upgrade options.



Note: Main unit dimensions do not include any projections.



UX-E Model (Premium)

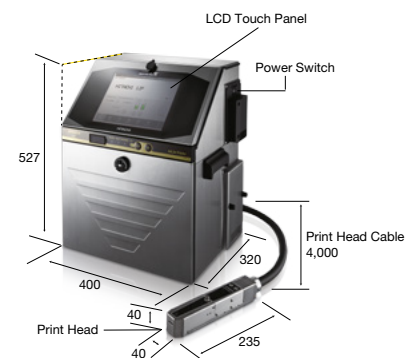
Standard Print Samples					
5 x 5	1 LINE 0123456789ABCDEF6H	2 LINE 012345678 ABCDEFGHI	3 LINE 012345678 ABCDEFGHI JKLMNOPQR	6 LINE 012345678 ABCDEFGHI JKLMNOPQR STUVWXYZ ABCDEFGHI JKLMNOPQR STUVWXYZ ABCDEFGHI JKLMNOPQR	
5 x 7	1 LINE 0123456789ABC	2 LINE 012345678 ABCDEFGHI	3 LINE 012345678 ABCDEFGHI JKLMNOPQR	4 LINE 012345678 ABCDEFGHI JKLMNOPQR STUVWXYZ	
7 x 10	1 LINE 0123456789	2 LINE 01234567 ABCDEFGH	3 LINE 0123456789013456 ABCDEFGHIJKLNO PQRSTUVWXYZABCDEFGHIJ		
10 x 12	1 LINE 0123456789ABC	2 LINE 0123456789 ABCDEFGHIJK			
12 x 16	1 LINE 0123456789ABC	2 LINE 0123456 01		2 LINE 012 ABC	
18 x 24	1 LINE 0123456789 0123456ABC				
24 x 32	1 LINE 012345ABCD				
30 x 40	1 LINE 012345ABCDEF				
36 x 48	1 LINE 012345ABCD				



Standard Specifications

Item	UX-E160W	
Nozzle Size	65µm	
Maximum number of print lines	Up to 6 lines	
Maximum number of print characters	Up to 1,000 characters	
Font (Horizontal x Vertical)	4 x 5	✓
	5 x 5	✓
	5 x 7(8), 9 x 7(8)	✓
	7 x 10	✓
	11 x 11	✓ (Chinese only)
	10 x 12	✓
	12 x 16	✓
	18 x 24	✓
	24 x 32	✓
	30 x 40	✓
36 x 48	✓	
Character height	2 - 10 mm	
Display & input device	WYSIWYG design Display: TFT LCD (10.4" color), backlight provided Input device: Touch panel, input sound provided	
Screen language (2 languages selectable)	English, Chinese, Korean, Thai, Vietnamese, German, French, Dutch, Italian, Spanish, Portuguese, Swedish, Danish, Greek, Russian, Czech, Polish, Arabic, Serbian, Turkish, Hungarian, Bulgarian, Catalan, Romanian, Finnish, Norwegian, Slovenian	
Maximum print rate (Character per second) (Font 5x5, space 1, 1 line)	Up to 2,563	
Standard characters	Alphanumeric (A-Z, a-z, 0-9), symbols (27) and space: Total 90	
User patterns	200 patterns each for dot matrix (50 patterns for 30x40 and 36x48 fonts)	
Print functions	Calendar, Count, Font mixture, Password	
Barcode printing	code39, ITF, NW-7, EAN-13, EAN-8, UPC-A, UPC-E, code128/EAN-128, GS-1 DataBar	
2D printing	Data Matrix (Alphabet: 49 characters/Numerals: 98 characters), QR, Micro QR code	
Message storage capacity	2,000 Messages (Depends on data content)	
Input signal	Print target detection, Printing stop, Rotary encoder pulse, Reciprocative printing, Remote control (Run, Stop, High-voltage ON/OFF, Reset), (NPN/PNP Selectable)	
Output signal	Print in progress or Print complete, Online (NPN/PNP Selectable), Print ready, Fault, Warning (NPN Only)	
Data interface	RS-232C at baud rates selectable up to 115,200bps	
Ethernet (Modbus communication)	IEEE802.3, 100BASE-T	
External memory	USB for user data storage	
Printhead cable length / angle	4m (in-line/90 degrees)	
Operating temperature range	0-45°C (1067K Ink)*	
Operating humidity range	30-90% RH (no condensation)	
Power supply (Automatic voltage selection)	AC100-120/220-240V±10% 50/60Hz 120 VA	
Approval	CE, C-Tick	
Dimensions (Width x Depth x Height)	400 x 320 x 527 mm	
International protection	IP65	
Approximate weight	27kg	

* Ink types and temperature are limited.



Note: Main unit dimensions do not include any projections.



UX-P Model (Pigmented)

Standard Print Samples

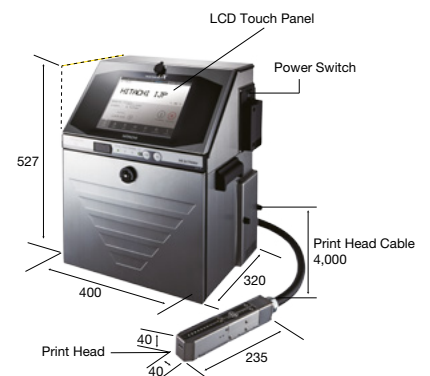
5 x 5	1 LINE 0123456789ABCDEFGH 012345678	2 LINE 012345678 ABCDEFGHI	3 LINE 012345678 ABCDEFGHI JKLMNOPQR	6 LINE 012345678 ABCDEFGHI JKLMNOPQR STUVWXY ZABCDEFGHI JKLMNOPQR STUVWXY ZABCDEFGHI JKLMNOPQR	
5 x 7	1 LINE 0123456789ABCD 0123456	2 LINE 012345678 ABCDEFGHI	3 LINE 012345678 ABCDEFGHI JKLMNOPQR	4 LINE 012345678 ABCDEFGHI JKLMNOPQR STUVWXYZ	
7 x 10	1 LINE 0123456789 012345	2 LINE 01234567 ABCDEFGH	3 LINE 0123456789012345678 ABCDEFGHIJKL MNOPQRS TUVWXYZ	4 LINE 012345678 ABCDEFGHI JKLMNOPQR STUVWXYZ	
10 x 12	1 LINE 0123456789ABCD 0123456789	2 LINE 01234567890 ABCDEFGHIJK			
12 x 16	1 LINE 0123456789ABC アイウエオカキクケコ 0123456 01 	2 LINE 01234 ABCDE			
18 x 24	1 LINE 0123456789  0123456ABC 				
24 x 32	1 LINE 0123456789ABCDEF 012345  				
30 x 40	1 LINE 012345ABCDEF				
36 x 48	1 LINE 012345ABCD				
Logo	JIS mark	CE mark	UL mark	DIN printing	Chimney printing
				ABC 084	0 1 2 3 4 5 6 7 8 9



Standard Specifications

Item	UX-P160W	
Nozzle Size	65µm	
Maximum number of print lines	Up to 6 lines	
Maximum number of print characters	Up to 1,000 characters	
Font (Horizontal x Vertical)	4 x 5	✓
	5 x 5	✓
	5 x 7(8), 9 x 7(8)	✓
	7 x 10	✓
	11 x 11	✓ (Chinese only)
	10 x 12	✓
	12 x 16	✓
	18 x 24	✓
	24 x 32	✓
	30 x 40	✓
36 x 48	✓	
Character height	2 - 10 mm	
Display & input device	WYSIWYG design Display: TFT LCD (10.4" color), backlight provided Input device: Touch panel, input sound provided	
Screen language (2 languages selectable)	English, Chinese, Korean, Thai, Vietnamese, German, French, Dutch, Italian, Spanish, Portuguese, Swedish, Danish, Greek, Russian, Czech, Polish, Arabic, Serbian, Turkish, Hungarian, Bulgarian, Catalan, Romanian, Finnish, Norwegian, Slovenian	
Maximum print rate (Character per second) (Font 5x5, space 1, 1 line)	Up to 2,083 (JP-W89 Ink)	
Standard characters	Alphanumeric (A-Z, a-z, 0-9), symbols (27) and space: Total 90	
User patterns	200 patterns each for dot matrix	
Print functions	Calendar, Count, Font mixture	
Barcode printing	code39, ITF, NW-7, EAN-13, EAN-8, UPC-A, UPC-E, code128/EAN-128, GS-1 DataBar	
2D printing	Data Matrix (Alphabet: 49 characters/Numerals: 98 characters), QR, Micro QR code	
Message storage capacity	Up to 2,000 Messages (Depends on data content)	
Input signal	Print target detection, Printing stop, Rotary encoder pulse, Reciprocativ printing, Remote control (Run, Stop, High-voltage ON/OFF, Reset), (NPN/PNP Selectable)	
Output signal	Print in progress or Print complete, Online (NPN/PNP Selectable), Print ready, Fault, Warning (NPN Only)	
Data interface	RS-232C at baud rates selectable up to 115,200bps	
Ethernet (Modbus communication)	IEEE802.3, 100BASE-T	
External memory	USB for user data storage	
Printhead cable length / angle	4m (in-line/90 degrees)	
Operating temperature range	0-40°C (JP-W89 Ink)	
Operating humidity range	30-90% RH (no condensation)	
Power supply (Automatic voltage selection)	AC100-120/220-240V±10% 50/60Hz 120 VA	
Approval	CE, UL, cUL, RCM, FCC, ICES	
Dimensions (Width x Depth x Height)	400 x 320 x 527 mm	
International protection	IP65	
Approximate weight	27kg	

Hitachi Industrial Equipment Systems Co., Ltd. (Hitachi) shall not be liable for any manufacturing loss, or any product damage due to trouble or malfunction of the ink jet printer. Hitachi continually improves products. The right, therefore, is reserved to alter the designs and/or specifications without giving prior notice. Information in this brochure is subject to change without notice.



Note: Main unit dimensions do not include any projections.



UX-Twin Model (Double nozzle)

Standard Print Samples

High-speed printing	2 LINE	Nozzle 2	01234567	2 LINE	Nozzle 2	01234567
		Nozzle 1	ABCDEFGH <small>160m/min, Font: 5x7</small>		Nozzle 1	ABCDEFGH <small>200m/min, Font: 5x7</small>
2,3-line printing	2 LINE	Nozzle 2	01234567890	3 LINE	Nozzle 2	01234567890
		Nozzle 1	ABCDEFGHIJK <small>Font: 7x10</small>		Nozzle 1	ABCDEFGHIJK TWINNOZZLEB <small>Font: 7x10</small>
Multi-line printing (4line, 8line)	4 LINE	Nozzle 2 (2 line English)	05/08/18 ABCD 05/02/19 1234	8 LINE	Nozzle 2 (4 line)	SELL BY AUG 8 MANUFACTURED BY HIES 11:37:17 BEST BY 05 FEB(FEB)2020 LOV 8929 0417 6557
		Nozzle 1 (2 line Arabic)	:0/:A/1A ABCD :0/:C/19 1C5E <small>Font: 5x8</small>		Nozzle 1 (4 line)	HITACHI INDUSTRIAL EQUIPMENT MADE IN JAPAN TEL:+81-4345-6077 IOS 9001 <small>Font: 5x7</small>
Dot mixture	Nozzle 2	ABCD	HIES UX	017H04		
	Nozzle 1	BEST BY	05FEB(FEB)2019	S28N02		<small>Font: 5x8, 12x6</small>
	Nozzle 2	UXTWIN	TOKYO EXPO PACKAGING TECHNICAL AREA CODING	860		
	Nozzle 1		HITACHI INDUSTRIAL EQUIPMENT SYSTEMS			<small>Font: 5x7, 12x6</small>
Logos*	Nozzle 2	[CE] 40 dots	Nozzle 2	[JIS] 48 dots	Nozzle 2	[A] 64 dots
	Nozzle 1		Nozzle 1		Nozzle 1	
Bold characters	Nozzle 2	5x7 BOLD 2 LINE S 5x7 BOLD 2 LINE B				
	Nozzle 1	5x7 BOLD 2 LINE S 5x7 BOLD 2 LINE B				<small>Font: 5x7</small>
Chimney characters	Nozzle 2	N X S O I H E Z W Y P R T M I		Nozzle 2	7777777 5555555 C C C C C C C H H H H H H H M M M M M M M Z Z Z Z Z Z Z W W W W W W W P P P P P P P R R R R R R R I I I I I I I T T T T T T T	
	Nozzle 1	N X S O I H E Z W Y P R T M I		Nozzle 1	7777777 5555555 C C C C C C C H H H H H H H M M M M M M M Z Z Z Z Z Z Z W W W W W W W P P P P P P P R R R R R R R I I I I I I I T T T T T T T	
Inverted characters (DIN printing)	Nozzle 2	12X16 DIN PRINT				
	Nozzle 1	~Z~R~D ~M~Z~H~I~O ~Z~O U~X~N~				<small>Font: 12x6, 7x5</small>
Barcodes, QR Codes & Datamatrix	Nozzle 2		Nozzle 2		Nozzle 2	
	Nozzle 1	6 11942 03936 4 4400 4" X 10" <small>Font: 24x32, 5x7</small>	Nozzle 1	Micro QR Code <small>Font: 15x15, 5x7</small>	Nozzle 1	Our Web Here <small>Font: 16x36, 5x7</small>

* When printing logos, please make sure the image is acceptable to the association or the organization.

** This printing will be made with use of graphics data (dot-pattern) but not with 2D code function. This graphics data (dot-pattern) should be prepared by the users. Read rate will vary depending on the print condition.

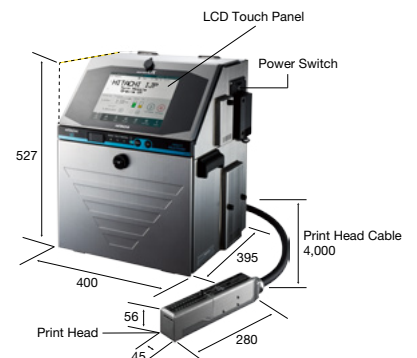


Standard Specifications

Item	UX-D860W	
Nozzle Size	65µm	
Maximum number of print lines	Up to 8 lines	
Maximum number of print characters	Up to 1,000 characters	
Font (Horizontal x Vertical)	4 x 5	✓
	5 x 5	✓
	5 x 7(8) 9 x 7(8)	✓
	7 x 10	✓
	11 x 11	✓ (Chinese only)
	10 x 12	✓
	12 x 16	✓
	18 x 24	✓
	24 x 32	✓
	30 x 40	✓*
	36 x 48	✓*
48 x 64	✓*	
Character height	2 - 21 mm	
Display & input device	WYSIWYG design Display: TFT LCD (10.4" color), backlight provided Input device: Touch panel, input sound provided	
Screen language (2 languages selectable)	English, Chinese, Korean, Thai, Vietnamese, German, French, Dutch, Italian, Spanish, Portuguese, Swedish, Danish, Greek, Russian, Czech, Polish, Arabic, Serbian, Turkish, Hungarian, Bulgarian, Catalan, Romanian, Finnish, Norwegian, Slovenian	
Maximum print rate (Character per second) (Font 5x5, space 1, 1 line)	Up to 2,296 (Option: Up to 2,563) per nozzle	
Standard characters	Alphanumeric (A-Z, a-z, 0-9), symbols (27) and space: Total 90	
User patterns	200 patterns each for dot matrix (50 patterns for 30x40, 36x48, 48x64 fonts)	
Print functions	Calendar, Count, Font mixture, Shift Code	
Barcode printing	code39, ITF, NW-7, EAN-13, EAN-8, UPC-A, UPC-E, code128/EAN-128, GS-1 DataBar	
2D code printing	Data Matrix (Alphabet: 49 characters/Numerals: 98 characters), QR Code, Micro QR code	
Message storage capacity	Up to 2,000 messages (Depends on data content)	
Input signal	Print target detection, Printing stop, Rotary encoder pulse, Reciprocal printing, Remote control (Run, Stop, High-voltage ON / OFF, Reset), (NPN / PNP Selectable)	
Output signal	Print in progress or Print complete, Online (NPN / PNP Selectable), Print ready, Fault, Warning (NPN Only)	
Data interface	RS-232C at baud rates selectable up to 115,200bps	
Ethernet (Modbus communication)	IEEE802.3, 100BASE-T	
External memory	USB for user data storage	
Printhead cable length / angle	4m (in-line/90 degrees)	
Operating temperature range	0-40° (1072K Ink)**	
Operating humidity range	30-90% RH (no condensation)	
Power supply (Automatic voltage selection)	AC100-120/220-240V±10% 50/60Hz 150VA	
Approval	CE, UL, cUL, RCM, FCC, ICES	
Dimensions (Width x Depth x Height)	400 x 395 x 527 mm	
International protection	IP55	
Approximate weight	34kg	

* The character is printed with the composite character made by the user patterns for both nozzles 1 and 2.

** Ink types and temperature are limited.



Note: Main unit dimensions do not include any projections.

Head Office

Japan

Hitachi Industrial Equipment Systems Co., Ltd.
Phone: +81 3 3258 1111
www.hitachi-ies.co.jp
info@hitachi-ds.com

Sales Offices

America

Hitachi America, Ltd.
Phone: +1 866 583 0048
www.hitachi-america.us/jjp
inkjetprinters@hal.hitachi.com

Asia

Hitachi Asia Ltd.
Phone: +65 6305 7400
www.hitachi.com.sg

China

Hitachi Industrial Equipment Systems Co., Ltd.
Phone: +86 21 5489 2378
www.hitachi.com.cn

Europe

Hitachi Europe GmbH
Phone: +49 211 5283 0
www.hitachi-industrial.eu
info@hitachi-ds.com

Oceania

Hitachi Australia Pty Ltd.
Phone: +61 2 9888 4100
www.hitachi.com.au

Follow us:



All company and product names in this brochure are the property of the respective companies.